

# **Community Center for the Elderly:**

**Site Selection within Alachua County**

---

## **Team Members:**

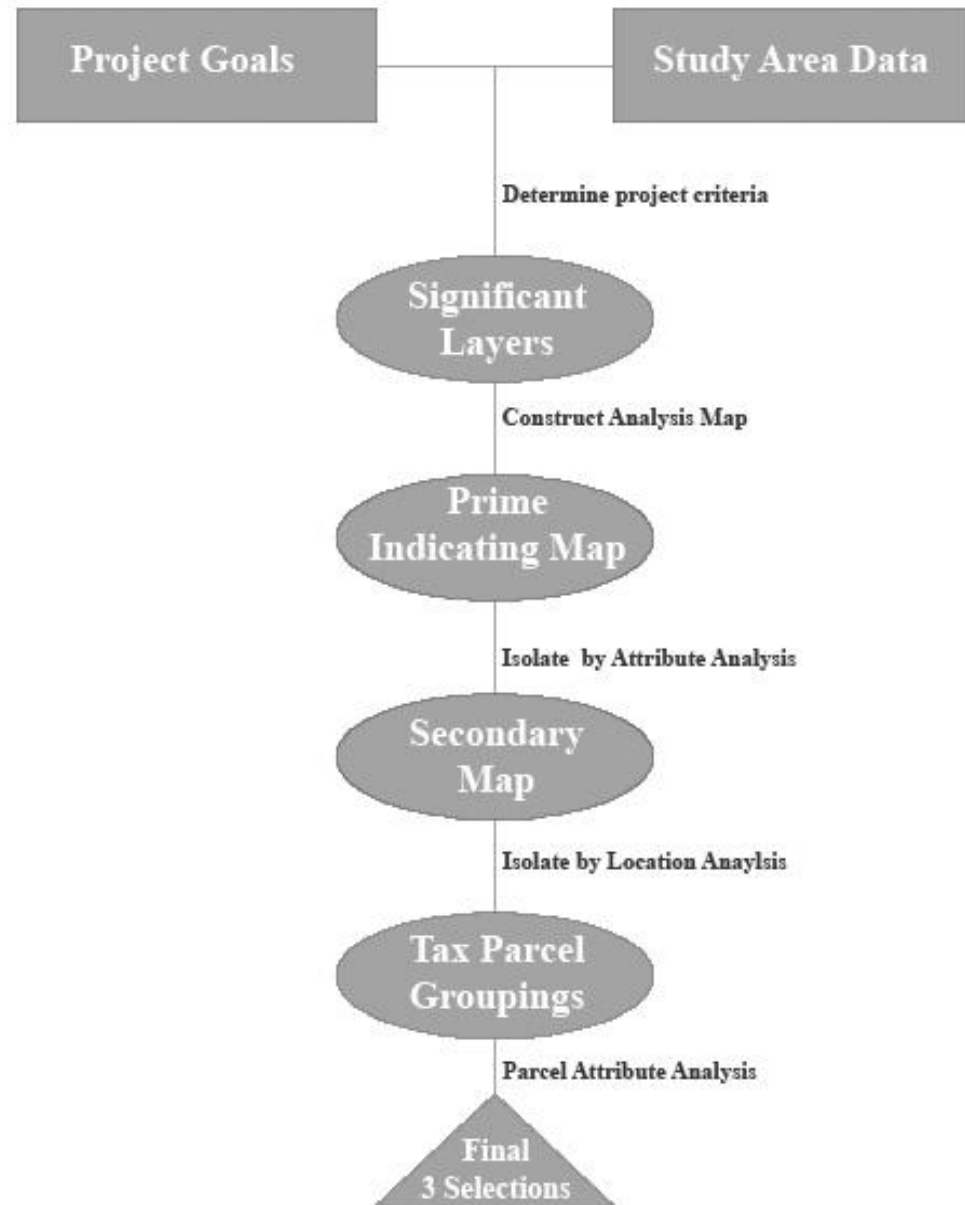
**Genesis Harrod**

**Galen Sencil**

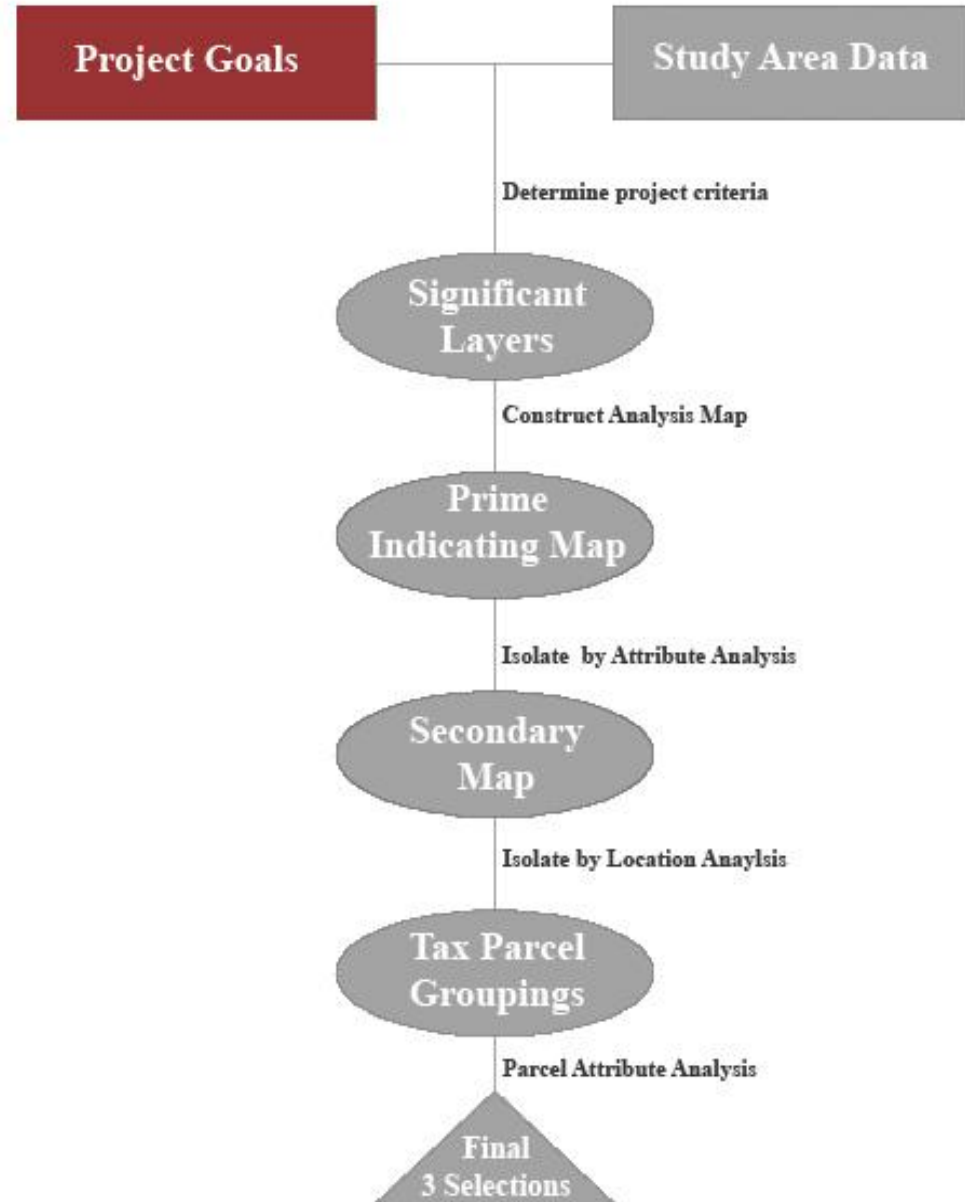
**Steven Marks**

**Bruce Werner**

# GIS Process



# GIS Process



# Project Goals



## Main Goal

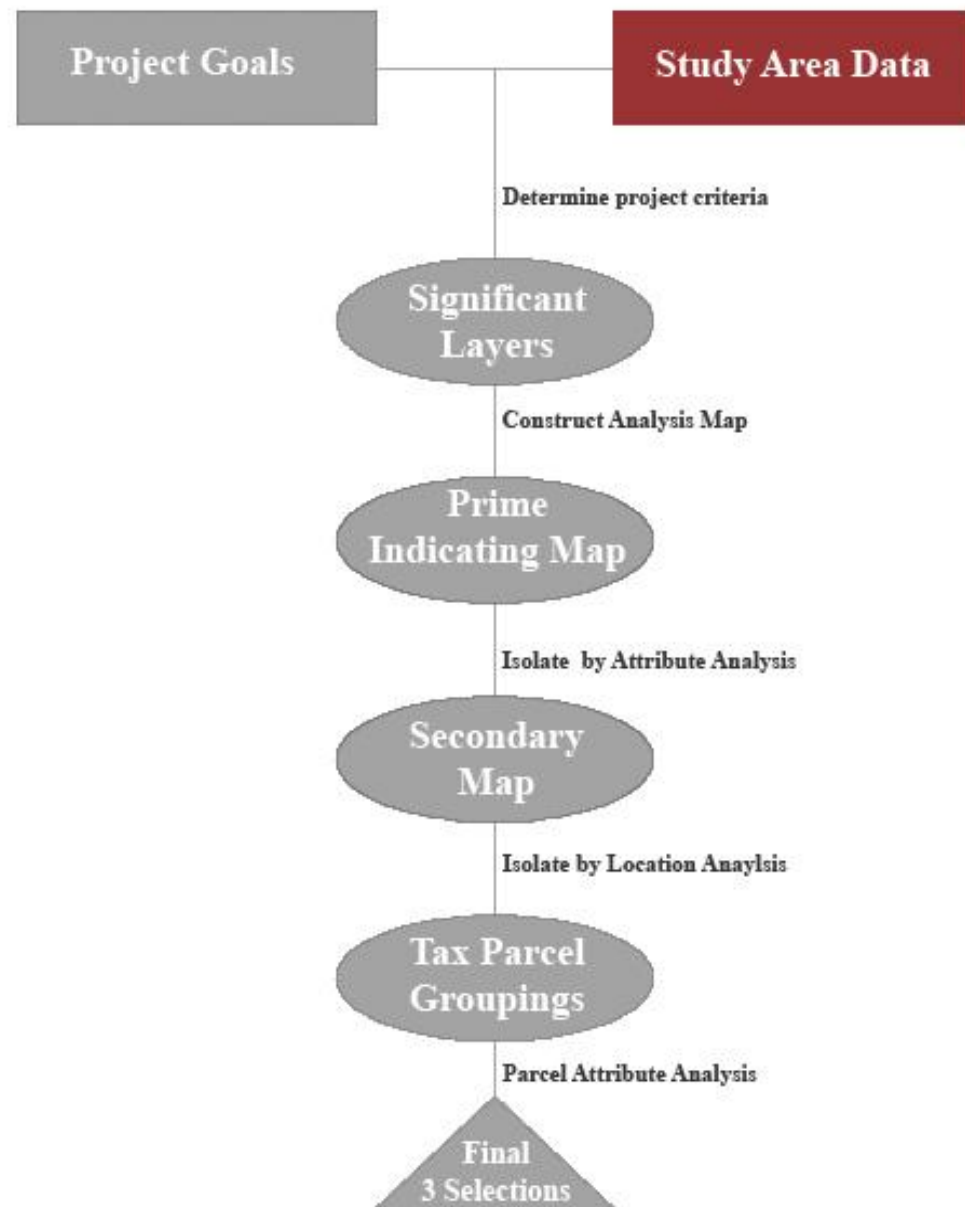
**The goal of this project was to find suitable locations for older adult community centers. We searched for geographic locations that maximized enrichment of older adult lifestyles in the Alachua County area.**

## Objectives to Reach Main Goal (Criteria)

Organizing our project considerations into a sequential framework, we established the following series of objectives:

- Identify areas where community center (CC) cannot be located
  - o Hazardous waste proximity
- Identify age groupings
  
- Identify desired public resources
  - o Public transit
  - o Urban service area
  
- Identify desired community resources
  - o Hospitals
  - o Schools
  - Select individual tax parcels
    - o Size (square feet)
    - o Zoning
    - o 1 Building
    - o 1 Story
    - o Land Size: .5-1.5 acres
    - o Developed

# GIS Process



# Study Area Data

Project Goals

Study Area Data

Determine project criteria

Significant  
Layers

Construct Analysis Map

Prime  
Indicating Map

Exclude by Attribute Analysis

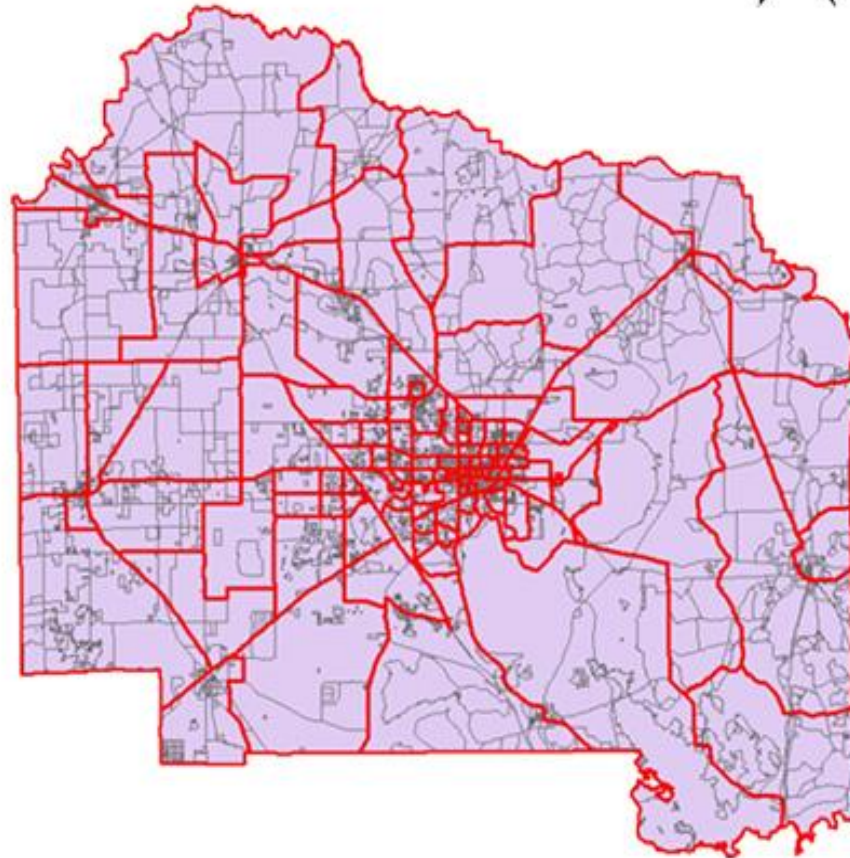
Secondary  
Map

Exclude by Location Analysis

Tax Parcel  
Groupings

Parcel Attribute Analysis

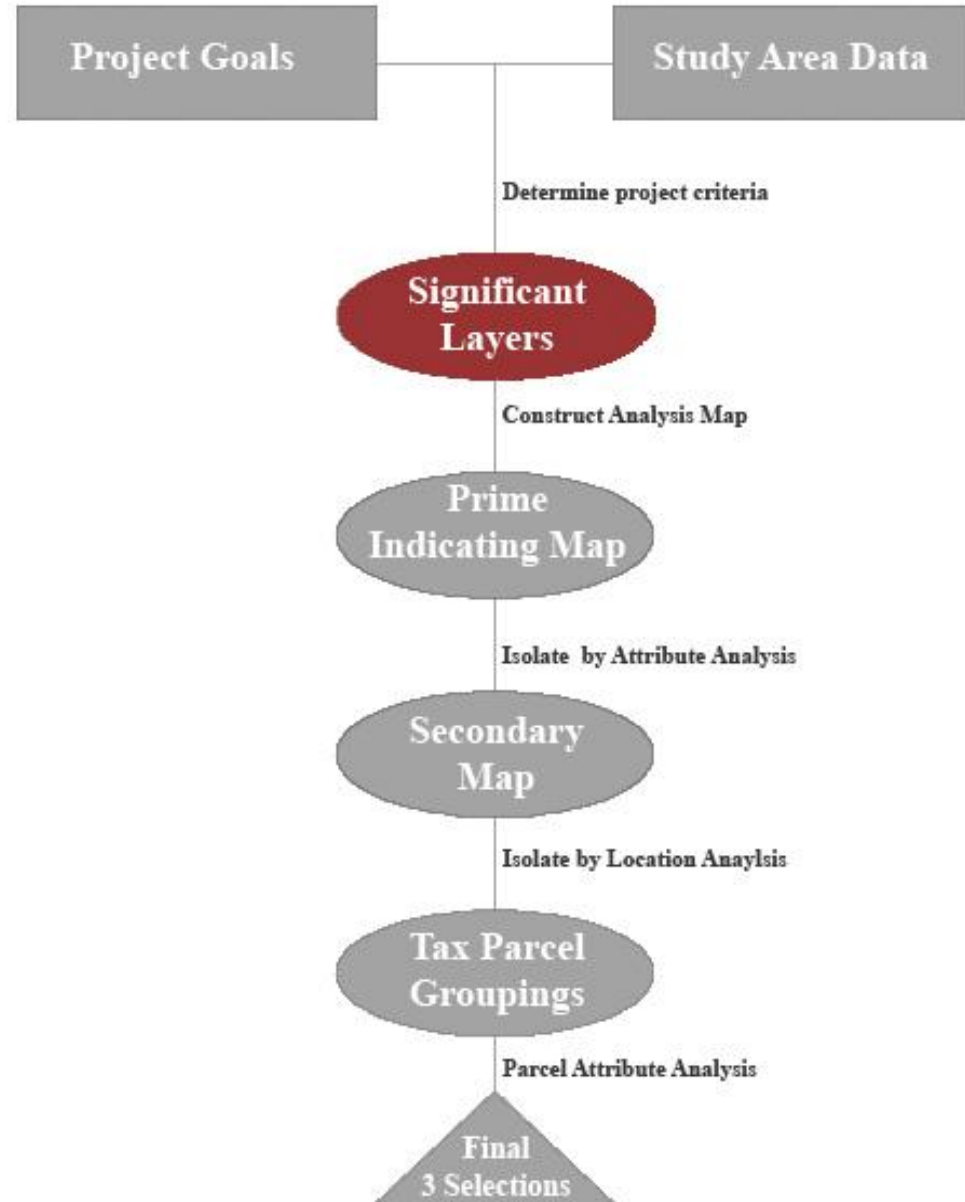
Final  
3 Selections



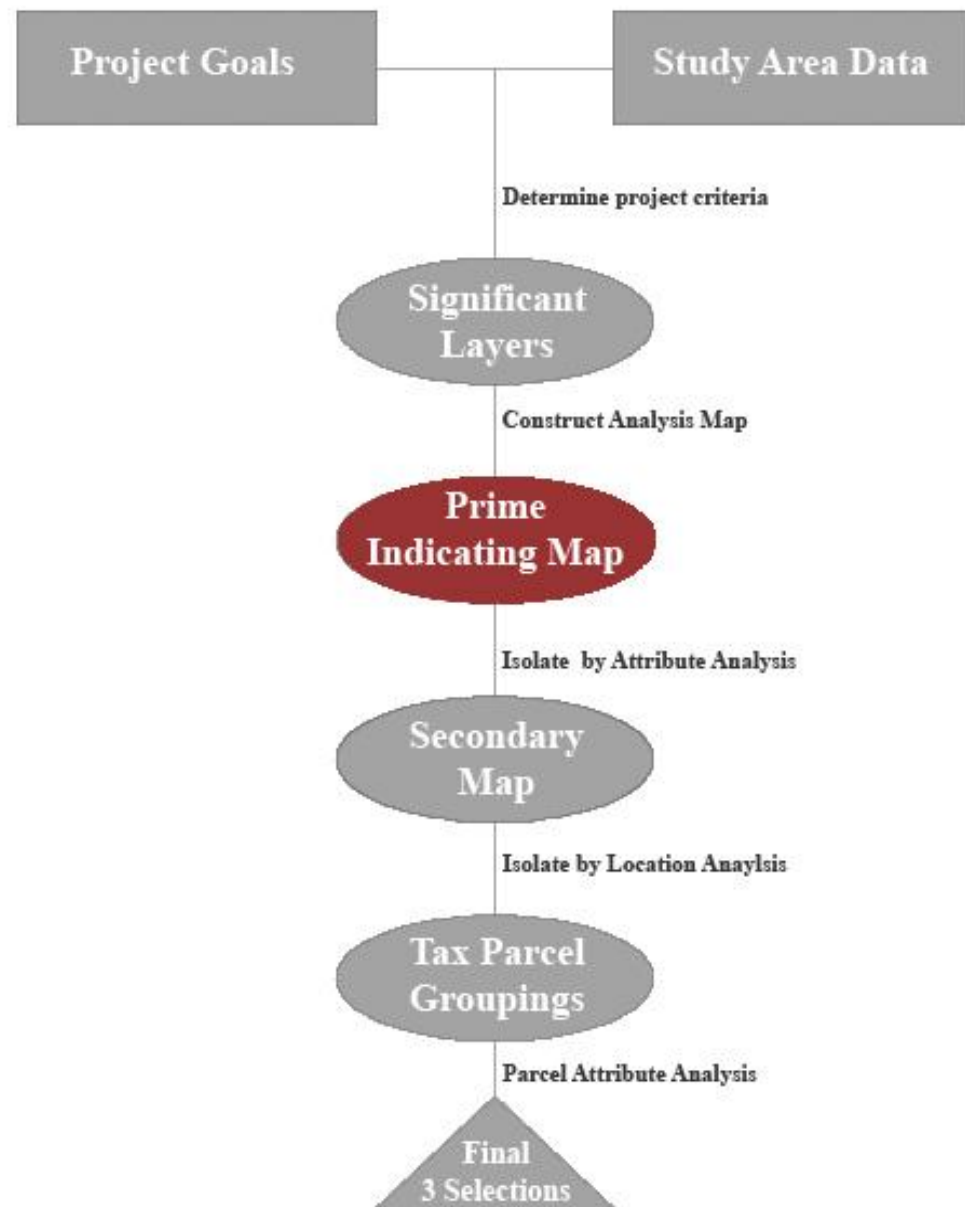
**Alachua County**

# GIS Process

Census block  
Tax parcels  
Transit routes  
Municipalities  
Group homes  
Hospitals  
Schools  
Major roads  
Hazardous waste  
Sewage treatment  
Solid waste  
Superfund sites  
Brownfield sites  
Wetlands  
Fire departments  
Alachua county boundaries  
Lakes

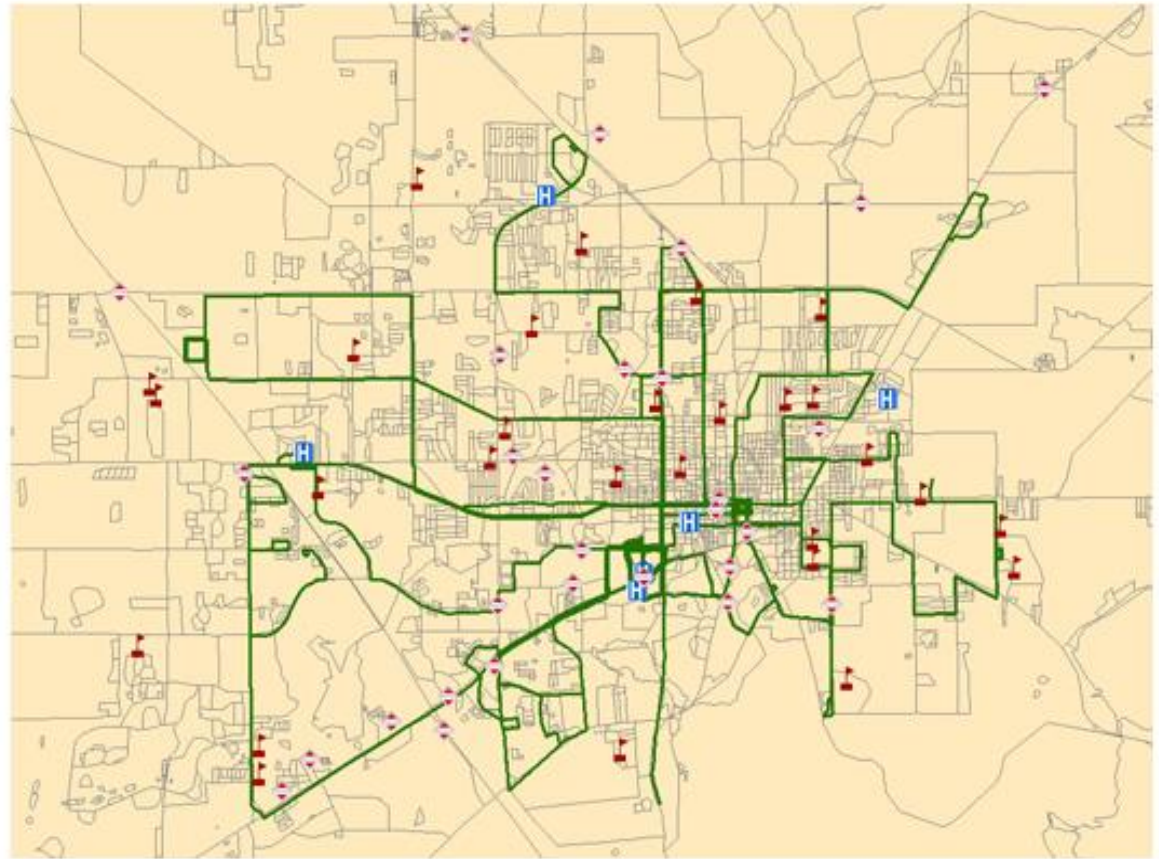


# GIS Process

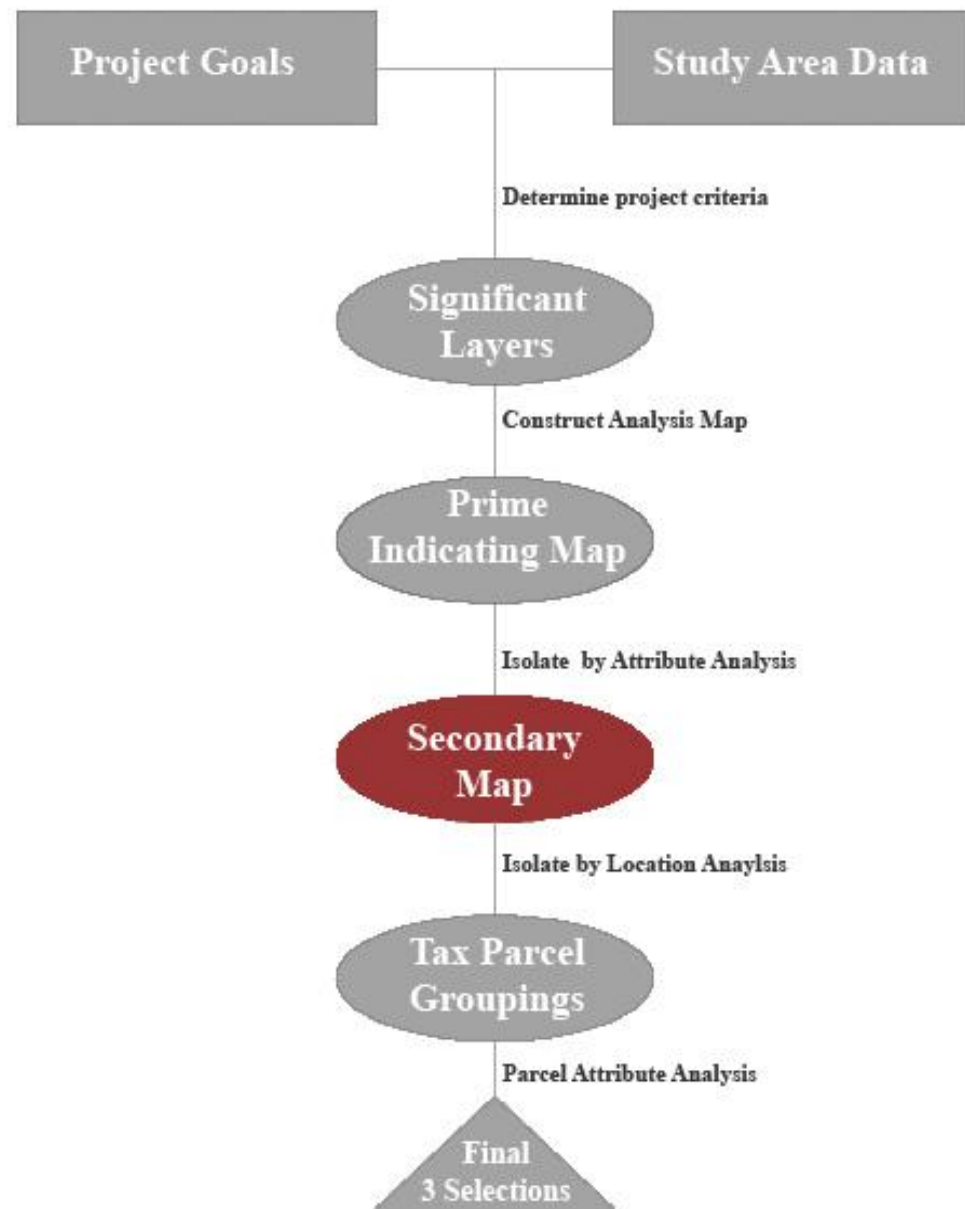




# Prime Indicating Map

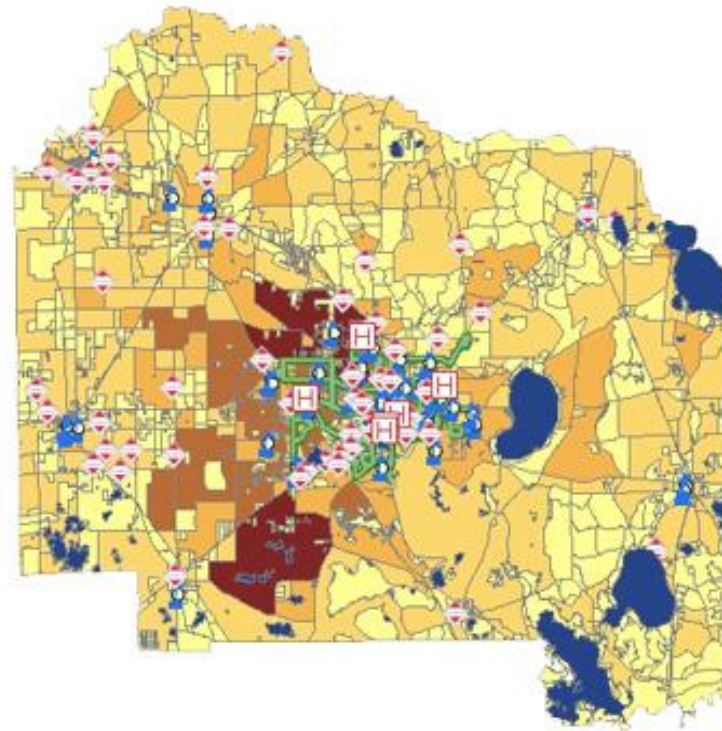


# GIS Process



# Secondary Map

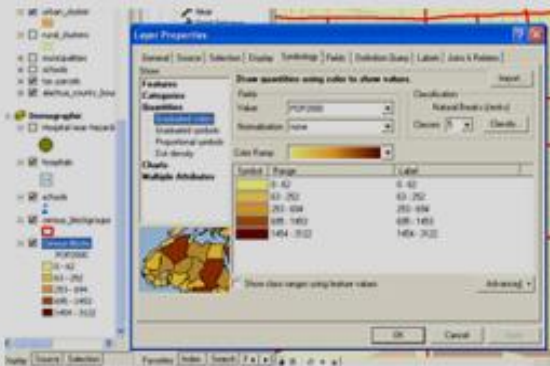
Each layer contains data relevant to the criteria used to choose a site for the community center within Alachua County.



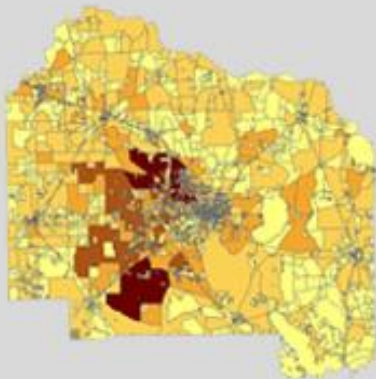
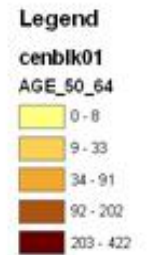
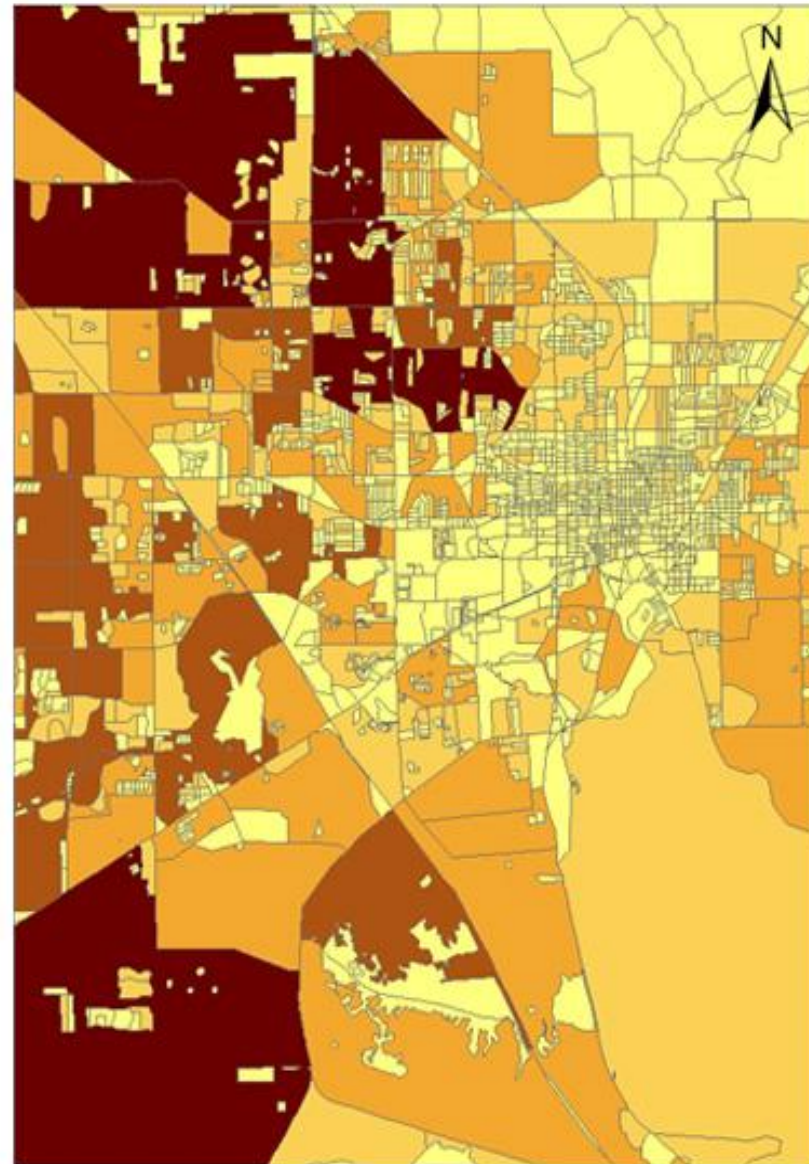


# Secondary Map

Each layer contains data relevant to the criteria used to choose a site for the community center within Alachua County.



## Population Densities











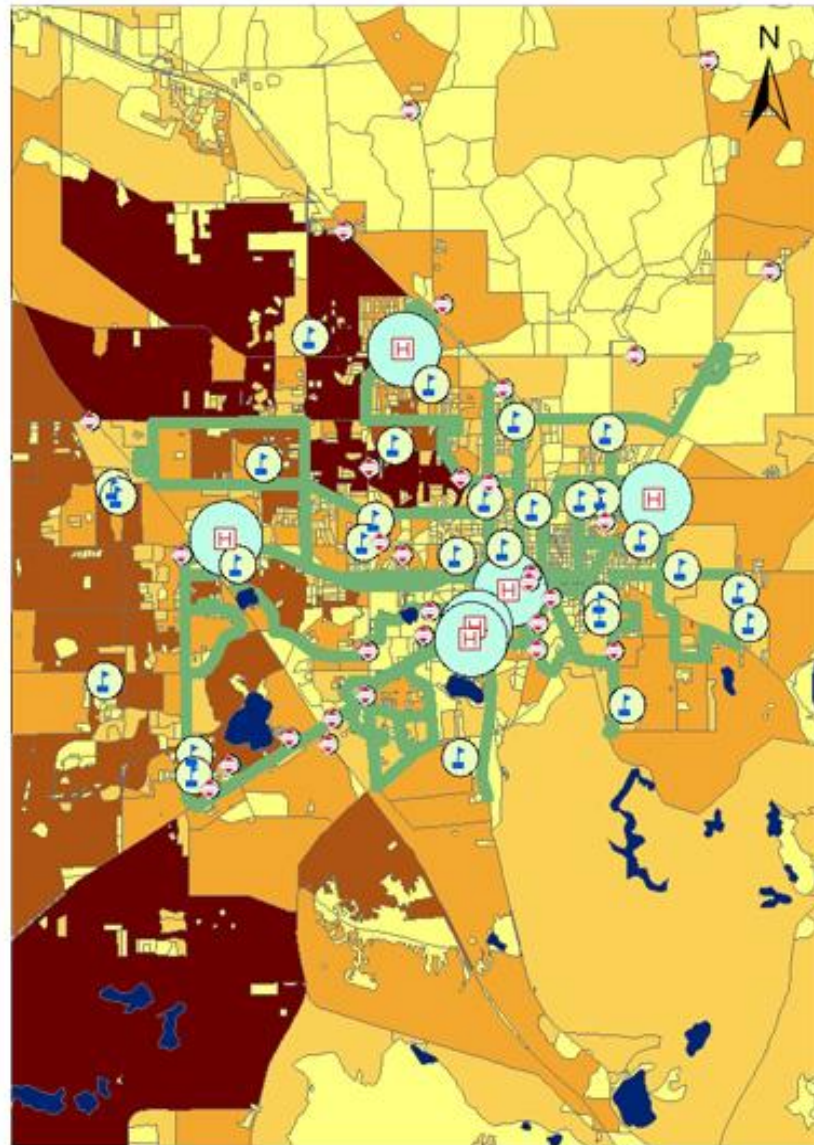




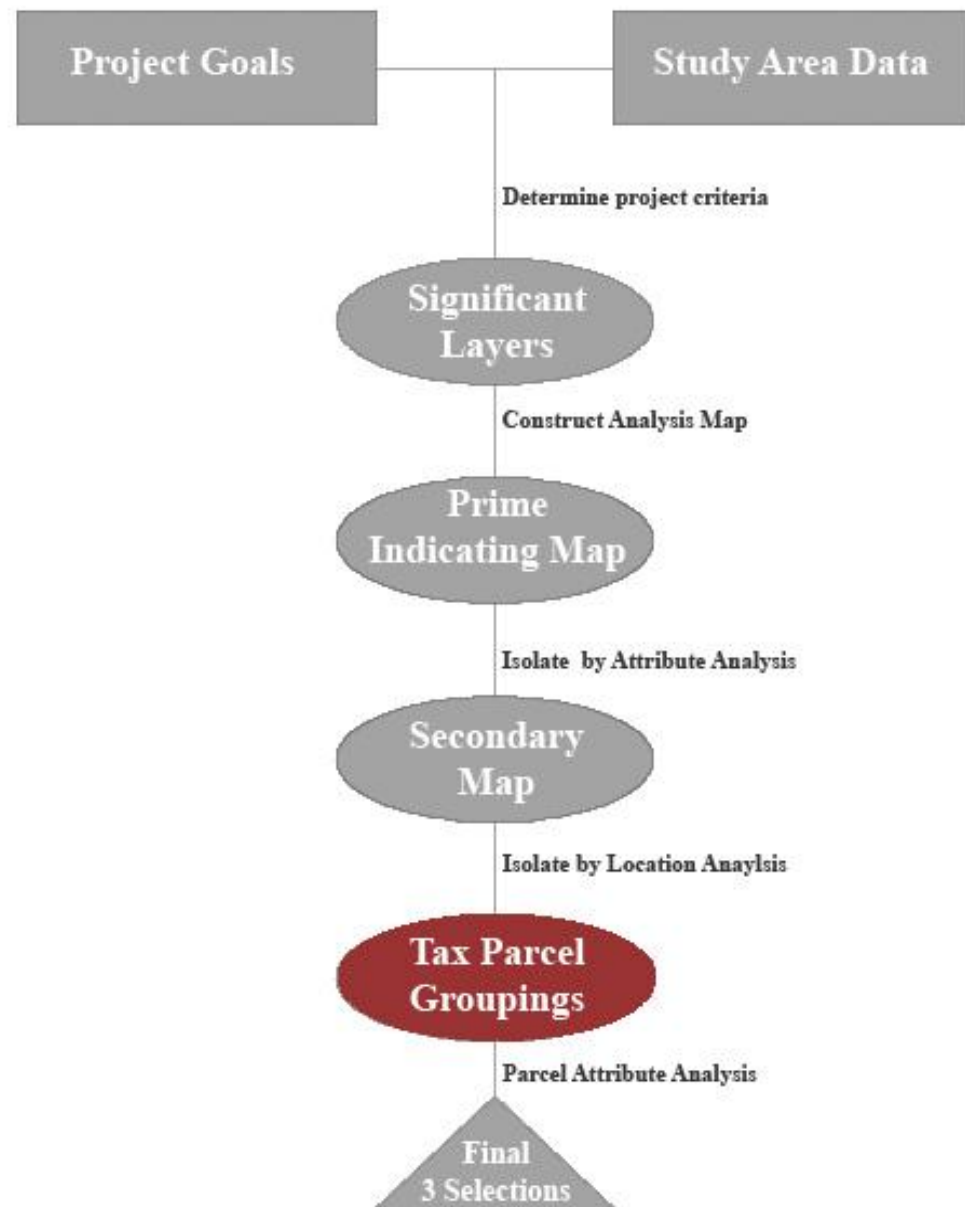


# Secondary Map

Overall Buffer Map



# GIS Process



## Site 1: Parcel Buffer (.6mi)

# Site 1

Census Block: 0-91 people ages 50-64

Hospital Proximity:

Accessible Transit Routes:

Waste Proximity:

Schools Proximity:

Urban Service Area:

Wetlands:

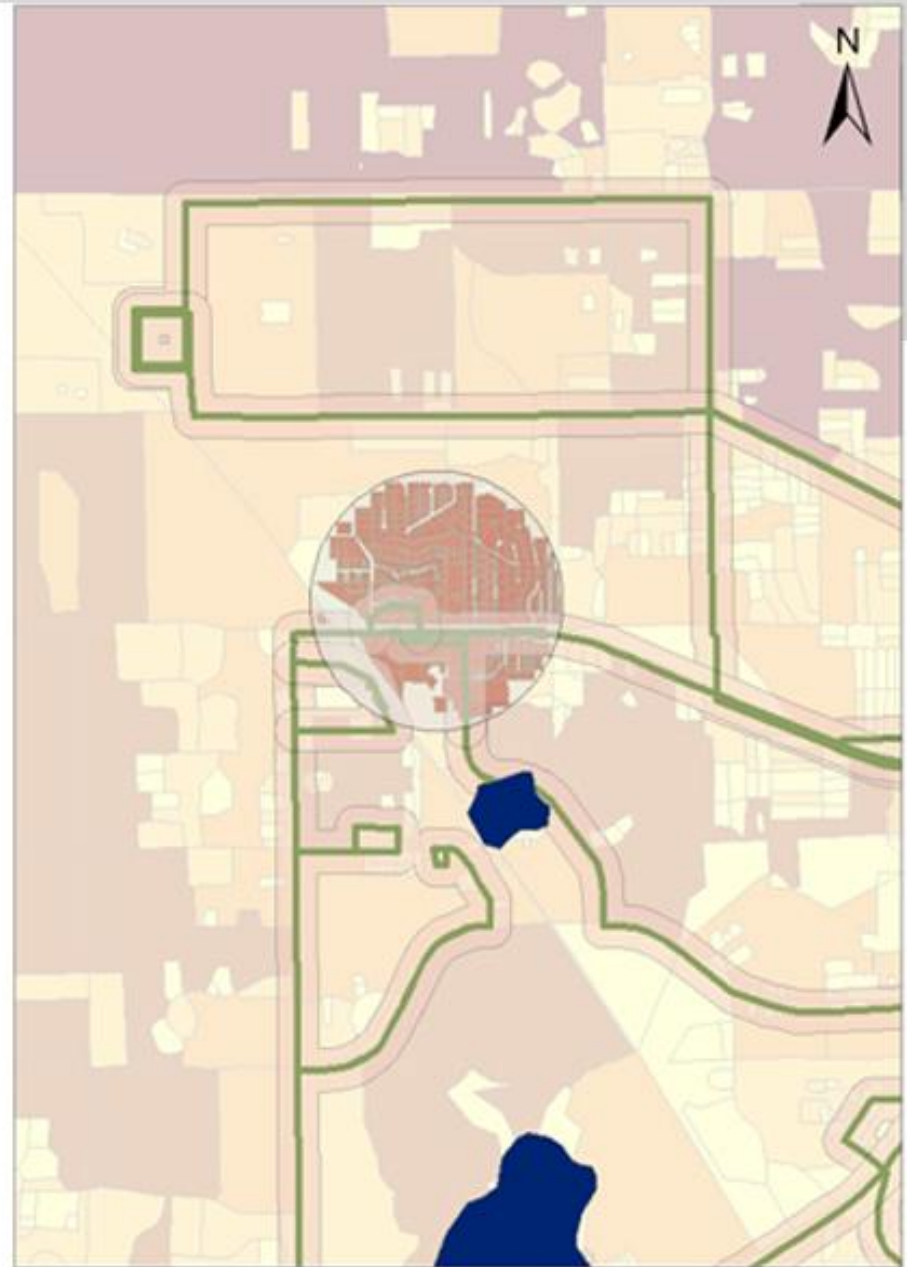
Bodies of Water:

Conservation Areas:

Tax Parcels:

ADVANTAGES

DISADVANTAGES



Parcels Shown in Red

## Site 2: Parcel Buffer (.6mi)

# Site 2

Census Block: 0-91 people ages 50-64

Hospital Proximity:

Accessible Transit Routes:

Waste Proximity:

Schools Proximity:

Urban Service Area:

Wetlands:

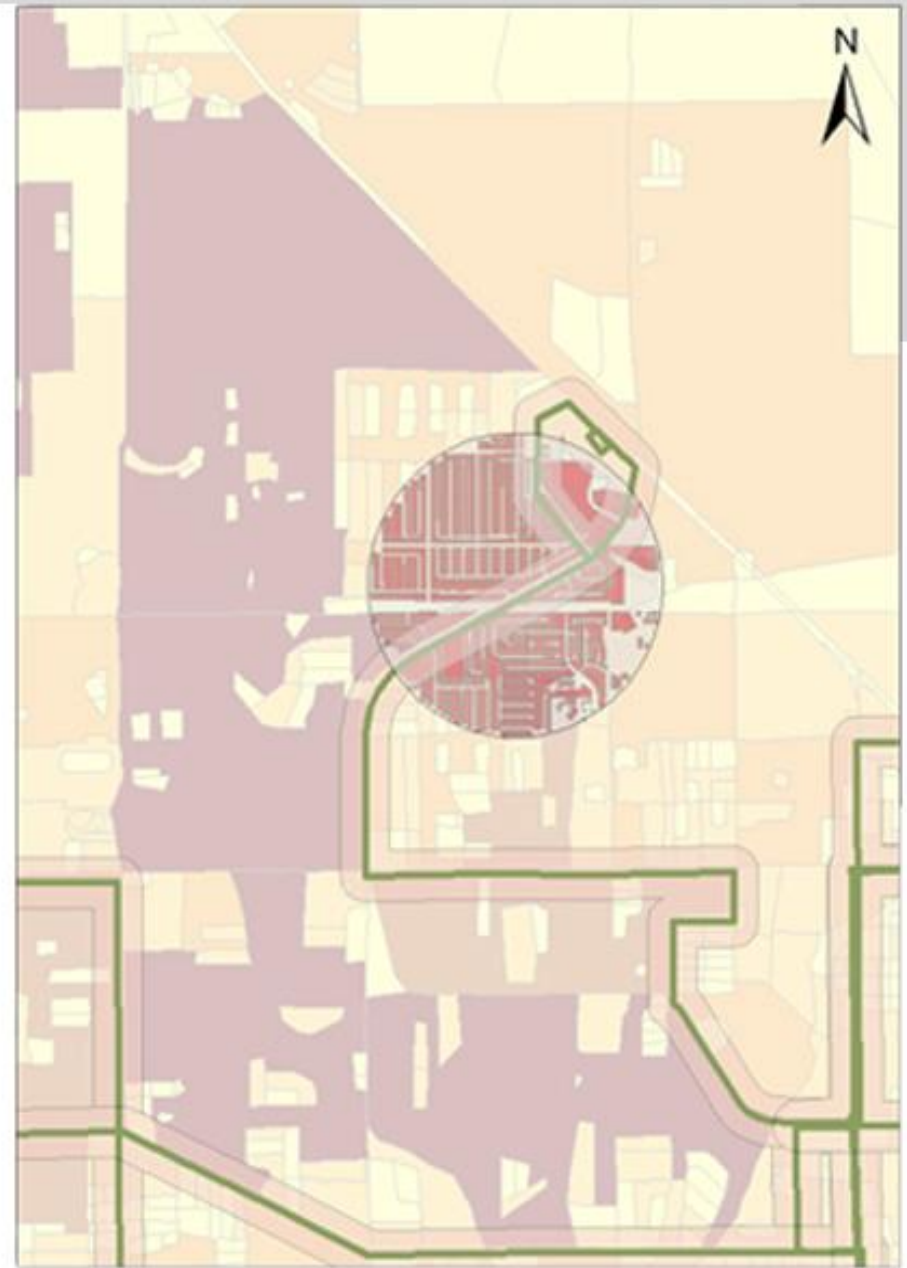
Bodies of Water:

Conservation Areas:

Tax Parcels:

### ADVANTAGES

### DISADVANTAGES



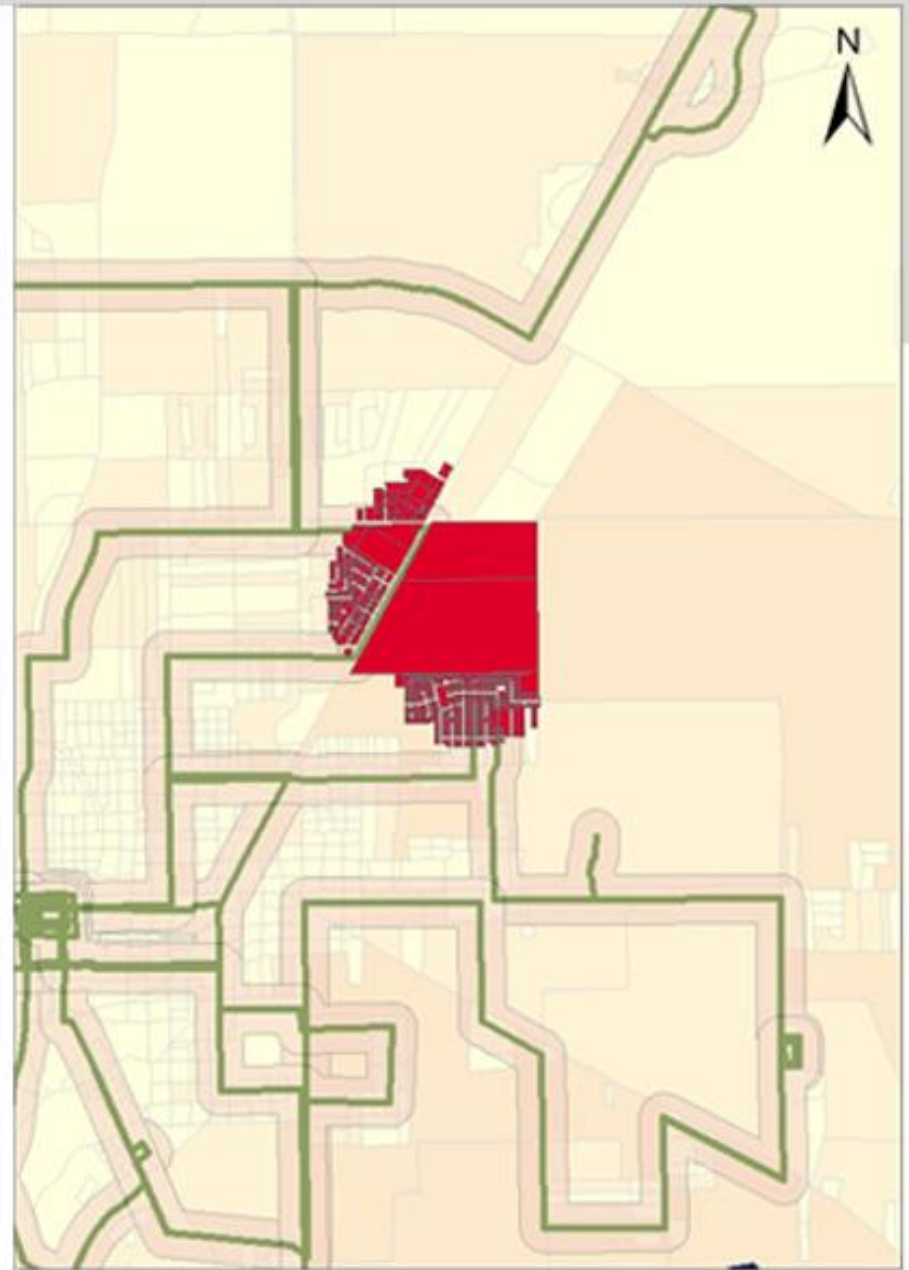
Parcels Shown in Red

# Site 3

- Census Block: 0-91 people ages 50-64
- Hospital Proximity:
- Accessible Transit Routes:
- Waste Proximity:
- Schools Proximity:
- Urban Service Area:
- Wetlands:
- Bodies of Water:
- Conservation Areas:
- Tax Parcels:

## ADVANTAGES

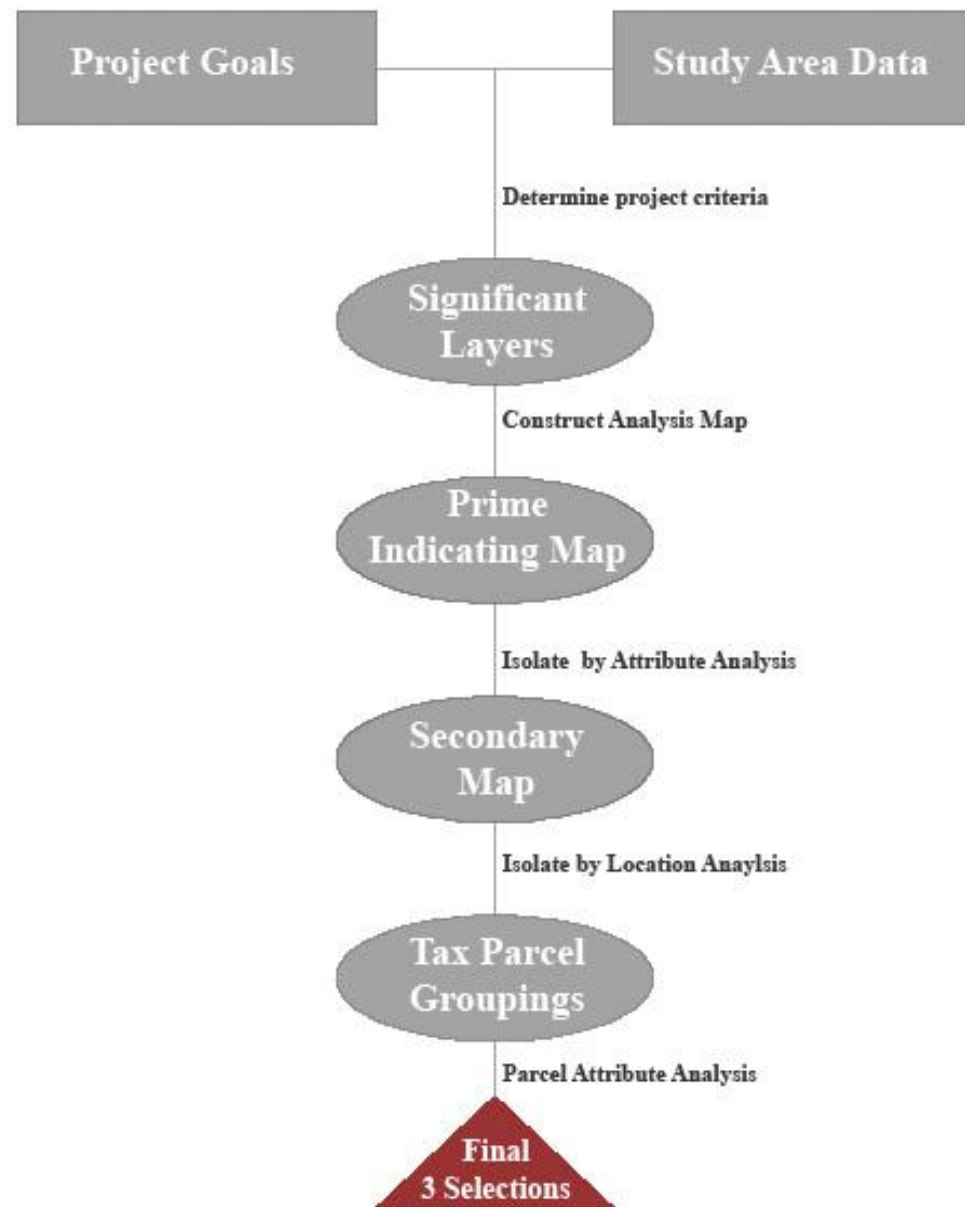
## DISADVANTAGES



Parcels Shown in Red



# GIS Process



# Site 1: Population Density Map

FID = 75888  
ID = 06553-012-000

SQFT = 3300  
HTSQFT = 2588

Stories = 1

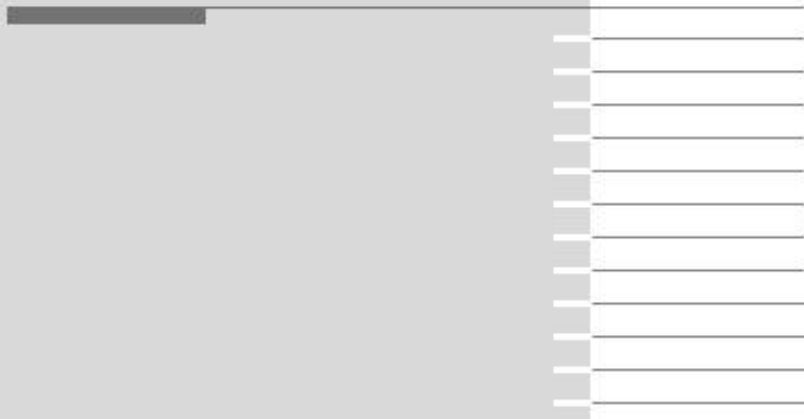
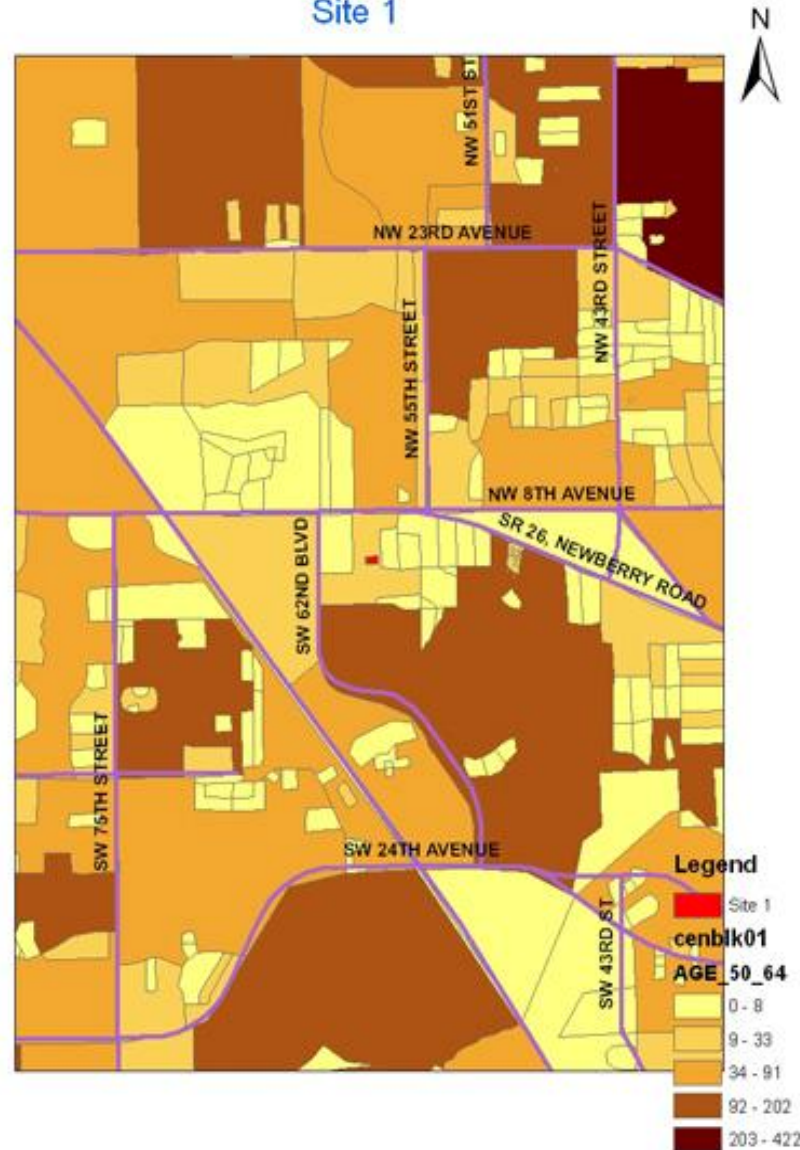
JURIS = Gville, Municipality  
Single Family Res.

CAT = Res.

LASTNAME= Feather  
FIRSTNAME = DAVID

ADDR = 450 NW 58TH ST. (Near SW 62nd Blvd.)

Site 1



# Site 1: Parcel Map

FID = 75888  
ID = 06553-012-000

SQFT = 3300  
HTSQFT = 2588

Stories = 1

JURIS = Gville, Municipality  
Single Family Res.

CAT = Res.

LASTNAME= Feather  
FIRSTNAME = DAVID

ADDR = 450 NW 58TH ST. (Near SW 62nd  
Blvd.)

Site 1



Legend

- Site 1
- Residential Selection(i)
- parcels

Horizontal lines for notes or data entry, including a thick grey bar on the left side of the page.





# Site 2: Parcel Map

FID = 60693

ID = 06014-010-042

SQFT = 3551

HTSQFT = 2291

STORIES = 1

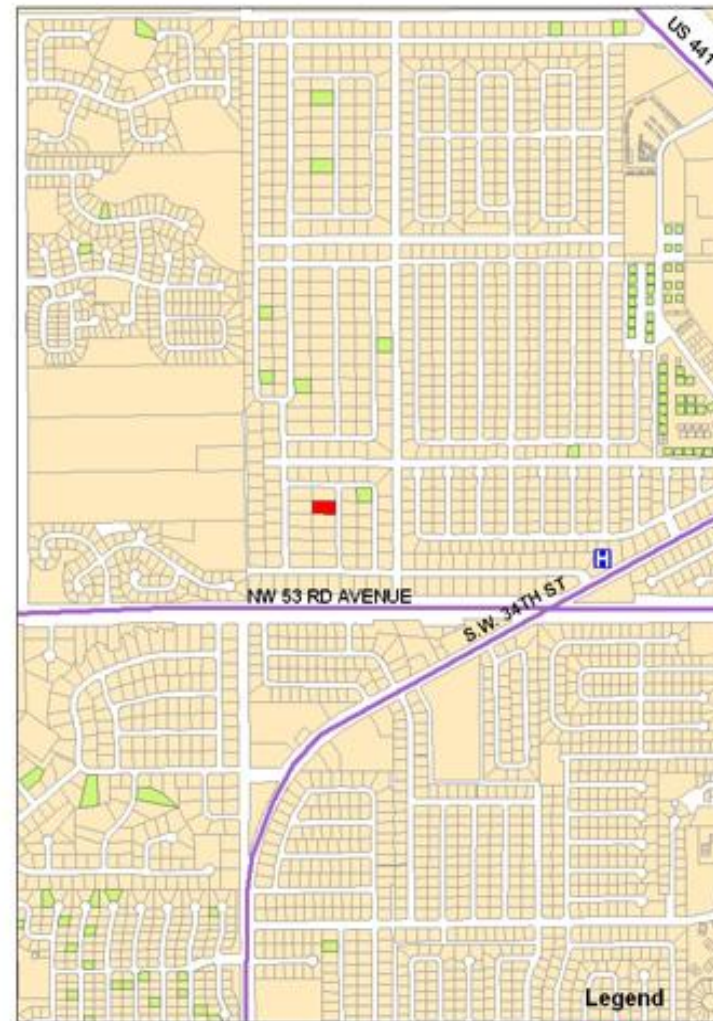
JURIS = Gville, Municipality  
Single Family Res.

CAT = Res.

LASTNAME = Coleman  
FIRSTNAME = Sandra

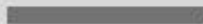
ADDR = 5530 NW 32ND ST

Site 2



### Legend

- Site 2
- Residential Selection(i)
- parcels









---

**The End**

**No questions, please**